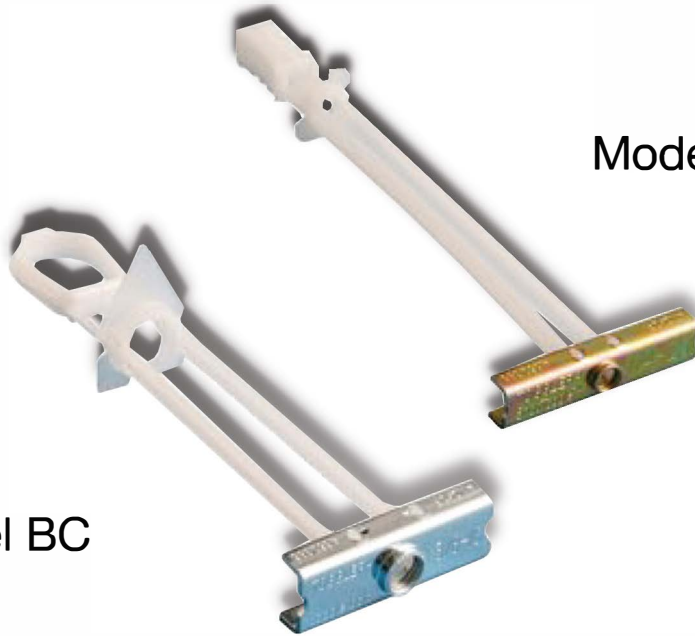


Hollow Wall Anchors

Featuring The Toggler® Snaptoggle® Toggle Bolt Anchors



Model BA & BB

Model BC

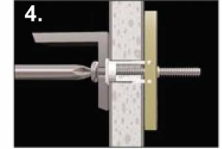
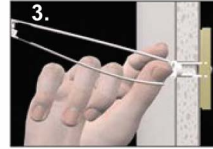
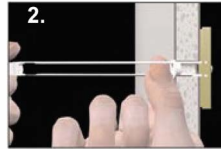
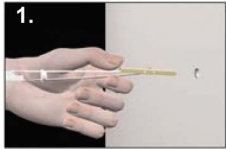
- High Strength
- Made in U.S.A.

ITEM NO.	MODEL	SCREW SIZE	DRILL SIZE	PACKAGE	STD PK
58732*	BA	10-24 (3/16)	1/2	Cardboard Box	100
58816*	BB	1/4-20 (1/4)	1/2	Cardboard Box	100
58900*	BC	3/8-16	3/4	Cardboard Box	25
58742	—	10-24 x 2 Th Sq/Slot	1/2	Clam Shell Mini Kit	6
58743	—	10-24 x 3 Th Sq/Slot	1/2	Clam Shell Mini Kit	6
58744	—	10-24 x 4 Th Sq/Slot	1/2	Clam Shell Mini Kit	6
58817	—	1/4-20 x 3 Th Sq/Slot	1/2	Clam Shell Mini Kit	6
58818	—	1/4-20 x 4 Th Sq/Slot	1/2	Clam Shell Mini Kit	6

*Includes Toggles Only

See Reverse Side for Installation Instructions and Pull-Out Values

Installation for Models BA and BB



Drill 1/2" (Ø13mm) hole. Hold metal channel flat alongside plastic straps and slide channel through hole. Minimum clearance behind wall is 1-7/8" (48mm).

Hold ends of straps between thumb and forefinger. Pull toward you until channel rests flush behind wall. Slide plastic cap along straps with other hand until flange of cap is flush with wall.

Snap straps at wall by pushing side to side, snapping off straps level with flange of cap.

Place item over flange. Insert bolt through item and tighten until flush against item, then stop. Use machine screw or bolt to match thread in channel: BA (3/16"-24), BB (1/4"-20). Bolt length equals item thickness plus wall or ceiling thickness plus 1/2" (13mm).

Ultimate Tensile Pull-Out Values (lbs)

ANCHOR	UNC THREAD	DRILL DIAMETER	1/2" DRYWALL	5/8" DRYWALL	*1/2" AND 25 GAUGE STUD	*5/8" AND 25 GAUGE STUD	CONCRETE BLOCK	1/2" STEEL PLATE	STAINLESS IN 1/2" STEEL ³
BA	3/16"-24	1/2"	238	356	412	462	802	918 ¹	1,193 ¹
BB	1/4"-20	1/2"	265	356	425	464	1,080	1,288 ²	1,735 ¹
BE	5/16"-18	3/4"	270	480	439	477	1,400	1,680	2,118
BC	3/8"-16	3/4"	275	576	466	488	1,745	1,692	2,523 ¹
BD	1/2"-13	3/4"	275	576	468	513	**2,038 ²	2,605	3,150

Ultimate Shear (lbs)

ANCHOR	UNC THREAD	DRILL DIAMETER	1/2" DRYWALL	5/8" DRYWALL
BA	3/16"-24	1/2"	247	298
BB	1/4"-20	1/2"	241	324
BC	3/8"-16	3/4"	292	406

* Failure Measured as Breakage of Drywall Portion
 ** Failure of Block

¹ Stainless Steel Bolts Used
² Hardened Bolts Used
³ Stainless Steel Channel Tested with Stainless Bolts in 1/2" Steel Plate